

# PT SERIES

## T-SLOT BASE PLATES

### FEATURES

- For use with Magtrol Dynamometers or Torque Transducers
- Universal precision, clamping and working surface
- Constructed of anodized aluminum
- Made according to EN 12020-2
- Face-milled on both sides
- Includes a set of countersunk mounting holes
- Thick-walled, resistant to warping and extremely solid
- Available in lengths from 400 mm to 1500 mm



Fig.1 : PT Series T-Slot Base Plate

### DESCRIPTION

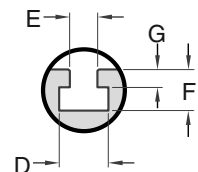
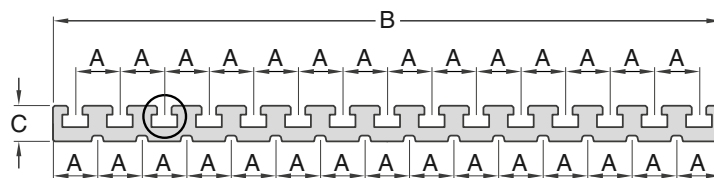
PT Series T-slot Base Plates are used for creating a basic test rig by mounting a Magtrol Dynamometer and/or Torque Transducer in line with the unit to be tested. Its solid, warp-resistant structure and multiple, single-sided T-slots enable modular construction that is cost-effective and easy to assemble.

### ORDERING INFORMATION

PT Series Base Plates are available in lengths from 400 mm to 1500 mm, in 100 mm increments. The length designates the model number. For example, a base plate that is 800 mm in length is a PT-800.

### DIMENSIONS

	in	mm
A	0.984	25.0
B	14.764	375.0
C	0.787	20.0
D	0.571	14.5
E	0.315	8.0
F	0.472	12.0
G	0.197	5.0



NOTE: Original dimensions are in Metric units. Dimensions converted to English have been rounded to 3 decimal places

Weight = 15.07 kg

©2020 MAGTROL | Due to continual product development, Magtrol reserves the right to modify specifications without forewarning.

Page 1 / 1

### DATASHEET