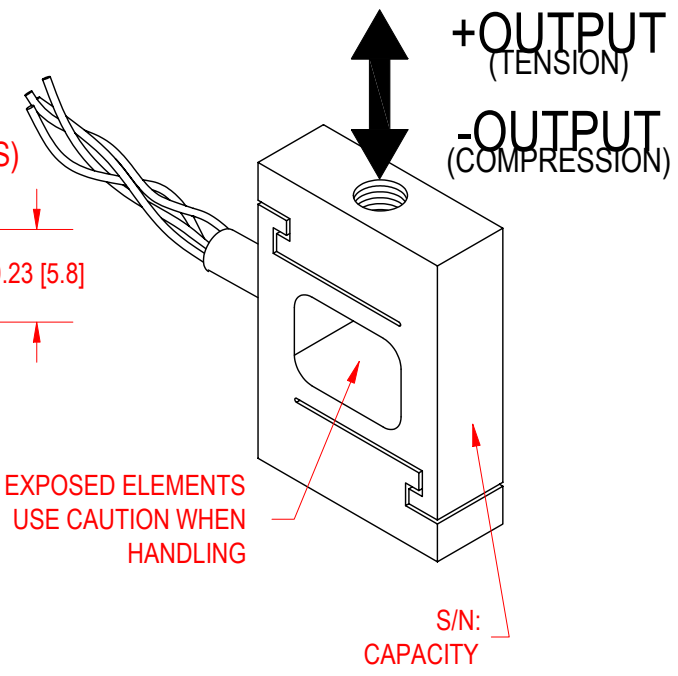
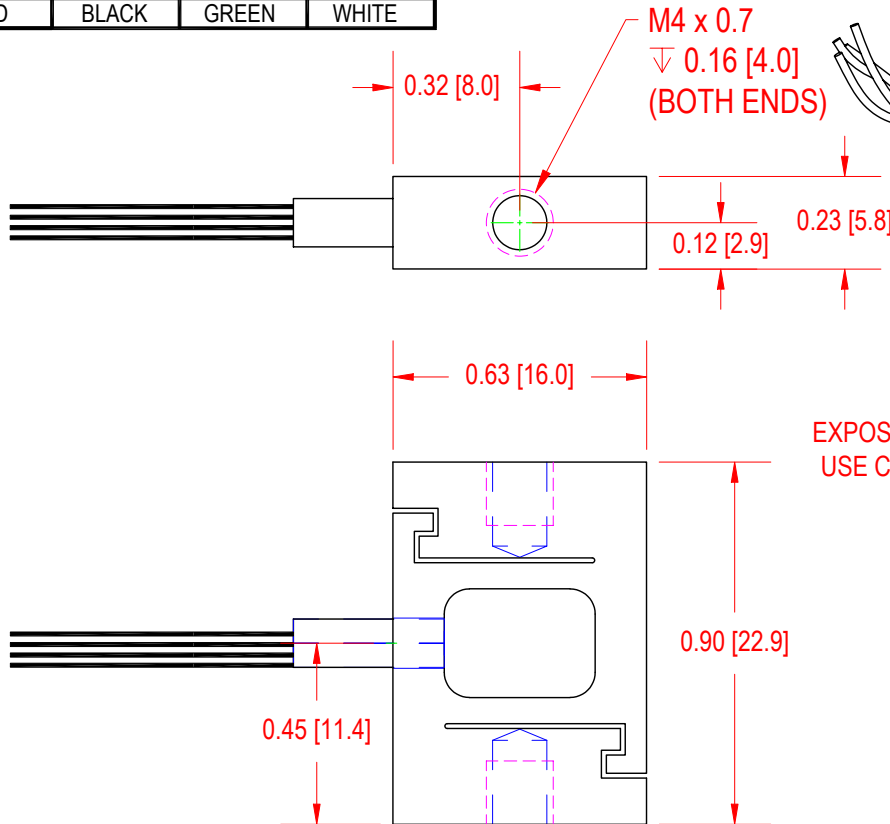


# FUTEK MODEL QLA329

STOCK NUMBER: SEE CHART

# CUSTOM JR S-BEAM LOAD CELL (OEM VERSION)

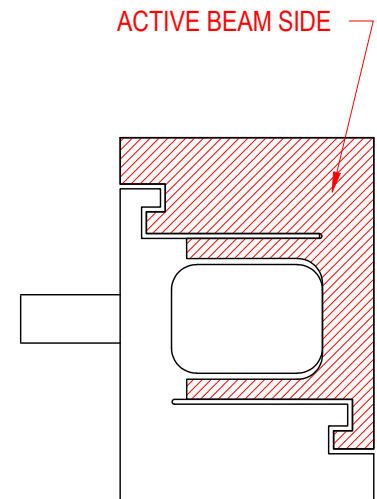
INCH (mm)		R.O.= Rated Output	
WIRING CODE (WC 1)			
+Excitation	-Excitation	+Signal	-Signal
RED	BLACK	GREEN	WHITE



STK#	lb (N)	SAFE OVERLOAD
QSH01342	15 (66.7)	1000%
QSH01343	50 (222)	200%

## SPECIFICATIONS:

RATED OUTPUT	1.50 to 2.25 mV/V
CAPACITY	SEE CHART
SAFE OVERLOAD	SEE CHART
ZERO BALANCE	±3% of R.O.
EXCITATION (VDC OR VAC)	10 Max
BRIDGE RESISTANCE	350 Ω.nom
NONLINEARITY	±0.1% of R.O.
HYSTERESIS	±0.1% of R.O.
NONREPEATABILITY	±0.05% of R.O.
TEMP. SHIFT ZERO	±0.01% of R.O./°F [0.018% of R.O./°C]
TEMP. SHIFT SPAN	±0.02% of LOAD/°F [0.036% of LOAD/°C]
COMPENSATED TEMP.	60 to 160°F [15 to 72°C]
OPERATING TEMP.	-60 to 200°F [-50 to 93°C]
MATERIAL	17-4ph S.S.
CABLE:	26 Awg 4 Conductor Spiral Teflon Cable - 8 in Long



**DSPM Industria**® Via Paolo Uccello 4 - 20148 Milano  
 sensori & trasduttori Tel +39 02 48 009 757 Fax +39 02 48 002 070  
 info@dspmindustria.it www.dspmindustria.it

CUSTOMER APPROVAL-COMPANY
CUSTOMER APPROVAL-NAME /DATE
REVISIONS: (Refer to dwg # revision sheet)
△ -

## OUTLINE DRAWING

STANDARD NOTES: (Unless Otherwise Specified)

- ALL DIMENSIONS ARE IN INCHES
- DRAWING INTERPRETATION DIMS. PER ASME-Y14.5M
- REMOVE BURRS AND BREAK SHARP EDGES .005 - .015
- THREADS PER HANDBOOK H-28
- DIMENSIONS ARE SHOWN AFTER PLATING

ANGLE: ±1/2°

CHAMFER: ±5°

TOLERANCE: .X ±0.1, .XX ±0.01, .XXX ±0.005

3rd ANGLE PROJ.

*This drawing is submitted solely for the information and exclusive use of the original addressee. It is not to be divulged in whole or in part, by any firm or individual without written permission from:*

**FUTEK**  
ADVANCED SENSOR TECHNOLOGY, INC.

**CAGE: 1X8M6**

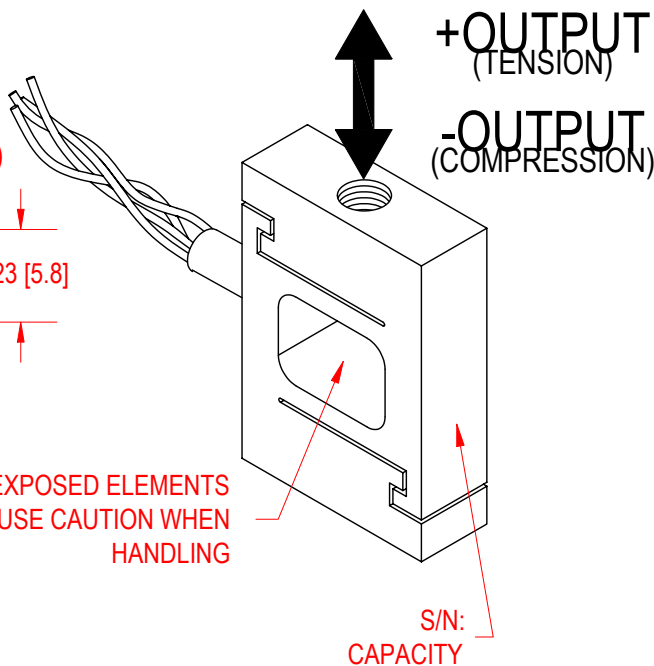
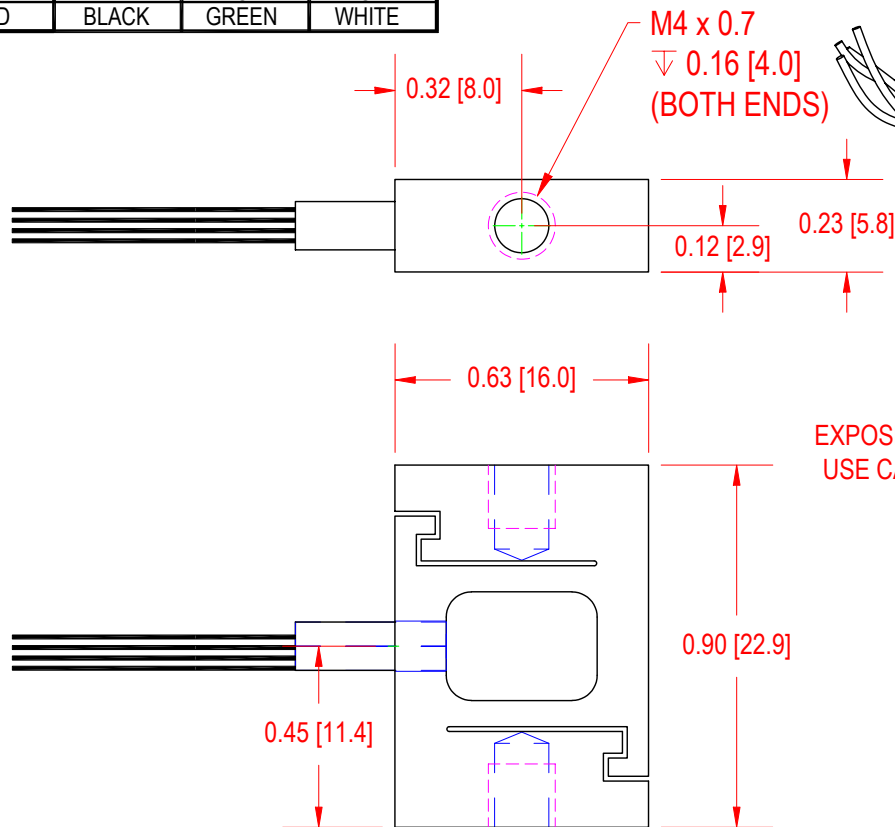
MODEL: <b>QLA329</b>	DWG No.: <b>FO1259</b>
DRAWN BY: R. WALKER	CHECKED BY: -
APPROVED BY: -	DATE: <b>Oct 15, 2009</b>

# FUTEK MODEL QLA329

STOCK NUMBER: SEE CHART

# CUSTOM JR S-BEAM LOAD CELL (OEM VERSION)

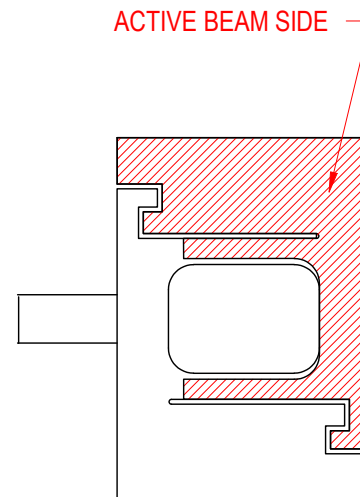
INCH (mm)		R.O.= Rated Output	
WIRING CODE (WC 1)			
+Excitation	-Excitation	+Signal	-Signal
RED	BLACK	GREEN	WHITE



## SPECIFICATIONS:

RATED OUTPUT	1.50 to 2.25 mV/V
CAPACITY	SEE CHART
SAFE OVERLOAD	SEE CHART
ZERO BALANCE	±3% of R.O.
EXCITATION (VDC OR VAC)	10 Max
BRIDGE RESISTANCE	350 Ω.nom
NONLINEARITY	±0.1% of R.O.
HYSTERESIS	±0.1% of R.O.
NONREPEATABILITY	±0.05% of R.O.
TEMP. SHIFT ZERO	±0.01% of R.O./°F [0.018% of R.O./°C]
TEMP. SHIFT SPAN	±0.02% of LOAD/°F [0.036% of LOAD/°C]
COMPENSATED TEMP.	60 to 160°F [15 to 72°C]
OPERATING TEMP.	-60 to 200°F [-50 to 93°C]
MATERIAL	17-4ph S.S.
CABLE:	26 Awg 4 Conductor Spiral Teflon Cable - 8 in Long

STK#	lb (N)	SAFE OVERLOAD
QSH01342	15 (66.7)	1000%
QSH01343	50 (222)	200%



DSPM Industria\* Via Paolo Uccello 4 - 20148 Milano  
 sensori & trasduttori Tel + 39 02 48 009 757 Fax + 39 02 48 002 070  
 info@dspmindustria.it www.dspmindustria.it

CUSTOMER APPROVAL-COMPANY
CUSTOMER APPROVAL-NAME /DATE
REVISIONS: (Refer to dwg # revision sheet)
△ -

## OUTLINE DRAWING

STANDARD NOTES: (Unless Otherwise Specified)

- ALL DIMENSIONS ARE IN INCHES
- DRAWING INTERPRETATION DIMS. PER ASME-Y14.5M
- REMOVE BURRS AND BREAK SHARP EDGES .005 - .015
- THREADS PER HANDBOOK H-28
- DIMENSIONS ARE SHOWN AFTER PLATING

ANGLE: ±1/2°  
 CHAMFER: ±5°  
 TOLERANCE:  
 .X ±0.1  
 .XX ±0.01  
 .XXX ±0.005

3rd ANGLE PROJ.

This drawing is submitted solely for the information and exclusive use of the original addressee. It is not to be divulged in whole or in part, by any firm or individual without written permission from:

**FUTEK**  
 ADVANCED SENSOR TECHNOLOGY, INC.

**CAGE: 1X8M6**

MODEL: **QLA329** DWG No.: **FO1259**

DRAWN BY: R. WALKER CHECKED BY: -

APPROVED BY: - DATE: **Oct 15, 2009**