

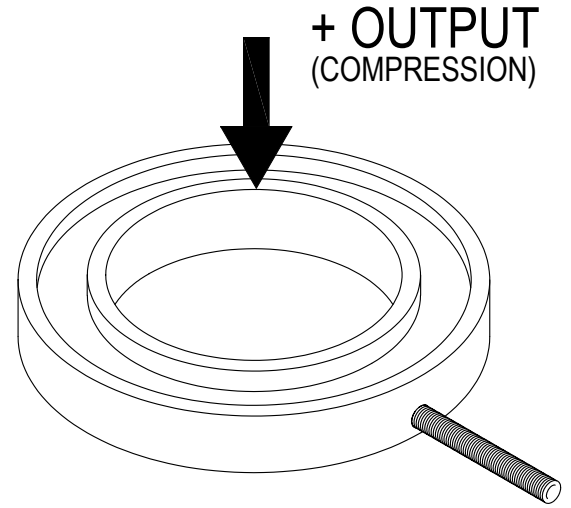
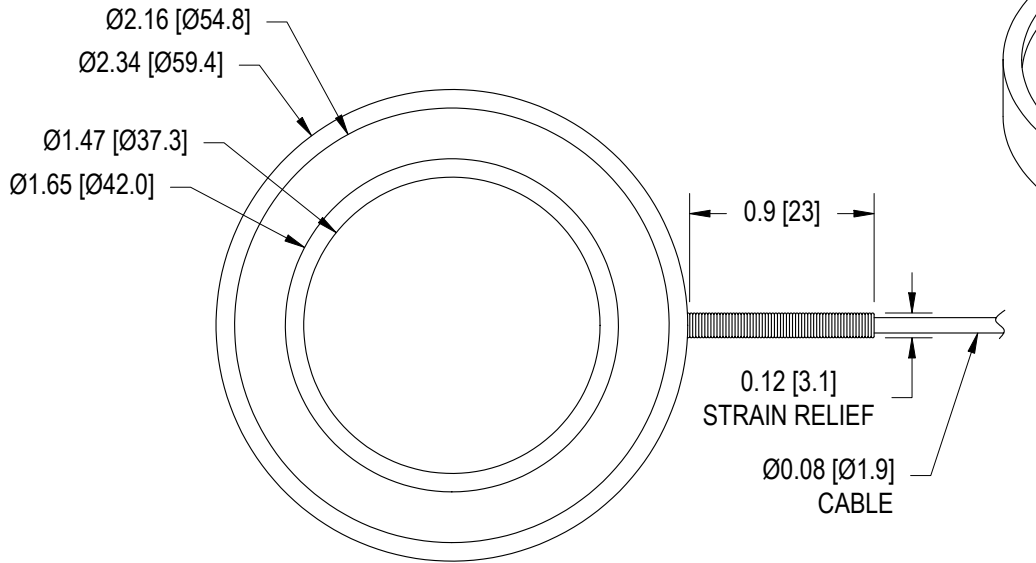
FUTEK MODEL QLA237

STOCK NUMBER: QSH00314

CUSTOM DONUT LOAD CELL

(PREVIOUSLY Q07567)

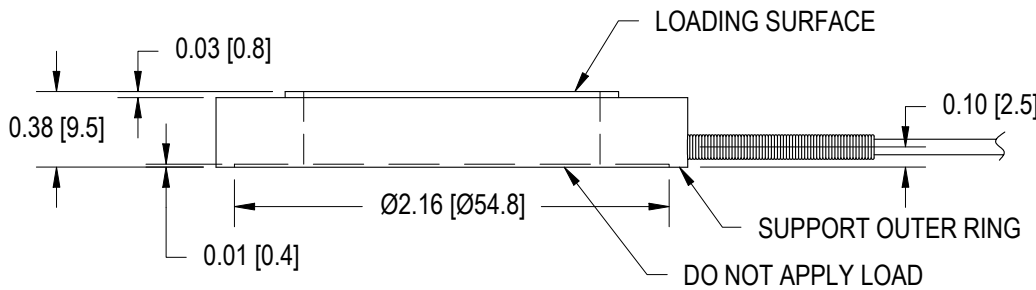
INCH (mm)		R.O.= Rated Output	
WIRING CODE (WC1)			
+Excitation	-Excitation	+Signal	-Signal
RED	BLACK	GREEN	WHITE
Shield			
FLOATING			



Note:

While torquing bolts, high tension forces will occur during installation which could result in overloading the sensor. Futek recommends connecting sensor to a system in order to monitor the applied forces.

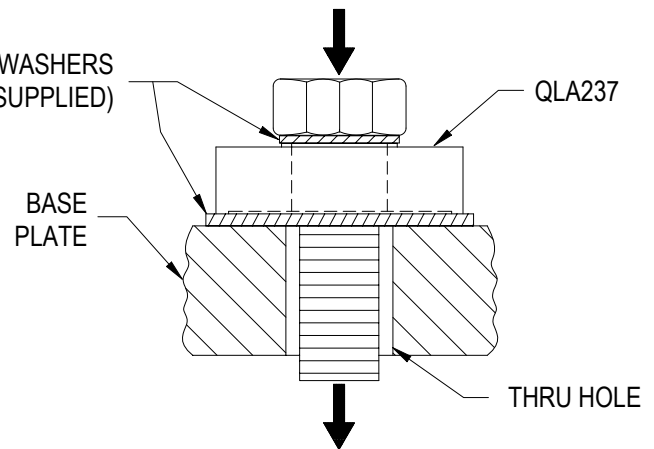
Futek is not liable or responsible for the mishandling of the sensor during installation.



SPECIFICATIONS:

RATED OUTPUT	2 mV/V nom.
CAPACITY	250 lb
SAFE OVERLOAD	50% of R.O.
EXCITATION (VDC OR VAC)	18 MAX
BRIDGE RESISTANCE	700 Ω nom.
NONLINEARITY	$\pm 3.0\%$ of R.O.
NONREPEATABILITY	$\pm 0.2\%$ of R.O.
TEMP. SHIFT ZERO	$\pm 0.005\%$ of R.O./ $^{\circ}$ F (0.009% of R.O./ $^{\circ}$ C)
COMPENSATED TEMP.	60 to 160 $^{\circ}$ F (15 to 72 $^{\circ}$ C)
OPERATING TEMP.	-60 to 212 $^{\circ}$ F (-50 to 100 $^{\circ}$ C)
MATERIAL	Stainless Steel
CABLE: #29 AWG, 4 Conductor, Shielded Teflon Cable 10 ft [3 m] Long	

MOUNTING DIAGRAM



MATERIAL: —

HEAT TREATMENT - FINISH: —

REVISIONS: (Refer to dwg # revision sheet)



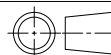
Via Paolo Uccello 4 - 20148 Milano
Tel +39 02 48 009 757 Fax +39 02 48 002 070
info@dspmindustria.it www.dspmindustria.it

OUTLINE DRAWING

STANDARD NOTES: (Unless Otherwise Specified)

- ALL DIMENSIONS ARE IN INCHES
- DRAWING INTERPRETATION DIMS. PER ASME-Y14.5M
- REMOVE BURRS AND BREAK SHARP EDGES .005 - .015
- THREADS PER HANDBOOK H-28
- DIMENSIONS ARE SHOWN AFTER PLATING

3rd ANGLE PROJ.



ANGLE: $\pm 1/2^{\circ}$

CHAMFER: $\pm 5^{\circ}$

TOLERANCE: .XX ± 0.01
.XXX ± 0.005

This drawing is submitted solely for the information and exclusive use of the original addressee. It is not to be divulged in whole or in part, by any firm or individual without written permission from:



CAGE: 1X8M6

MODEL: QLA237

DWG No.: FO1095

DRAWN BY: H. AU

CHECKED BY: XXXXX

APPROVED BY: XXXXX

DATE: JUN 1, 2005

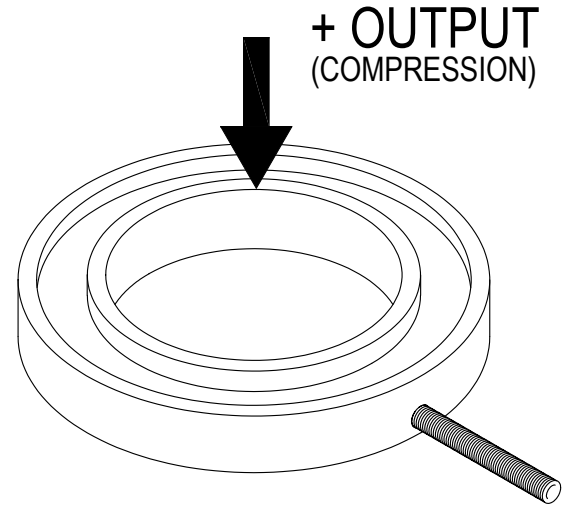
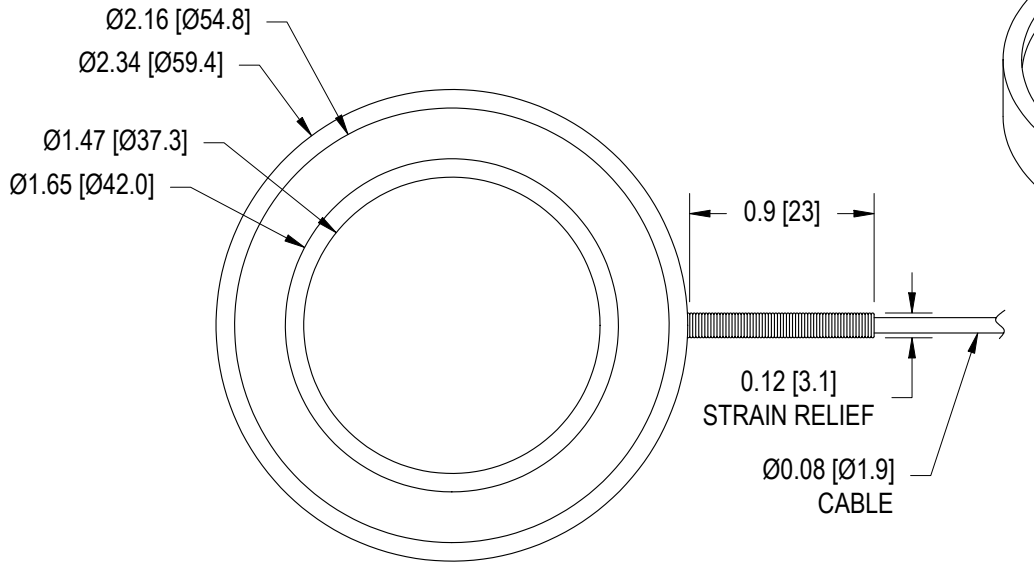
FUTEK MODEL QLA237

STOCK NUMBER: QSH00314

CUSTOM DONUT LOAD CELL

(PREVIOUSLY Q07567)

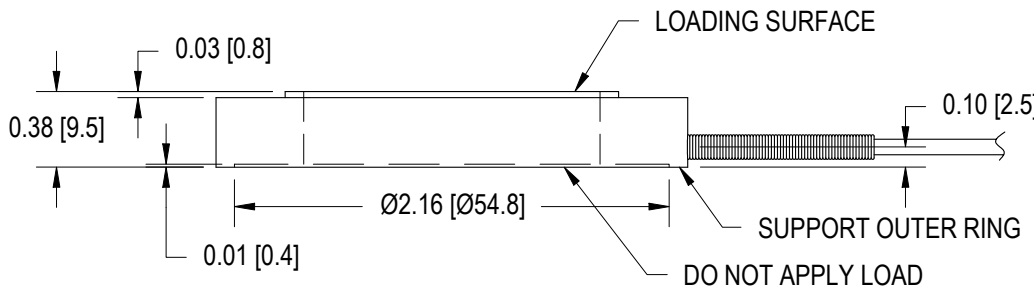
INCH (mm)		R.O.= Rated Output	
WIRING CODE (WC1)			
+Excitation	-Excitation	+Signal	-Signal
RED	BLACK	GREEN	WHITE
Shield			
FLOATING			



Note:

While torquing bolts, high tension forces will occur during installation which could result in overloading the sensor. Futek recommends connecting sensor to a system in order to monitor the applied forces.

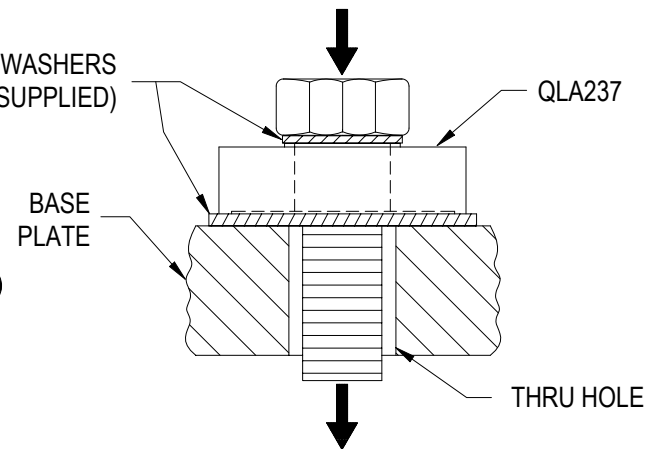
Futek is not liable or responsible for the mishandling of the sensor during installation.



SPECIFICATIONS:

RATED OUTPUT	2 mV/V nom.
CAPACITY	250 lb
SAFE OVERLOAD	50% of R.O.
EXCITATION (VDC OR VAC)	18 MAX
BRIDGE RESISTANCE	700 Ω nom.
NONLINEARITY	±3.0% of R.O.
NONREPEATABILITY	±0.2% of R.O.
TEMP. SHIFT ZERO	±0.005% of R.O./°F (0.009% of R.O./°C)
COMPENSATED TEMP.	60 to 160°F (15 to 72°C)
OPERATING TEMP.	-60 to 212°F (-50 to 100°C)
MATERIAL	Stainless Steel
CABLE: #29 AWG, 4 Conductor, Shielded Teflon Cable 10 ft [3 m] Long	

MOUNTING DIAGRAM



MATERIAL:

—

HEAT TREATMENT - FINISH:

—

REVISIONS: (Refer to dwg # revision sheet)

XXX

dspm industria
sensori & trasduttori

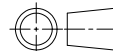
Via Paolo Uccello 4 - 20148 Milano
Tel +39 02 48 009 757 Fax +39 02 48 002 070
info@dspmindustria.it www.dspmindustria.it

OUTLINE DRAWING

STANDARD NOTES: (Unless Otherwise Specified)

- ALL DIMENSIONS ARE IN INCHES
- DRAWING INTERPRETATION DIMS. PER ASME-Y14.5M
- REMOVE BURRS AND BREAK SHARP EDGES .005 - .015
- THREADS PER HANDBOOK H-28
- DIMENSIONS ARE SHOWN AFTER PLATING

3rd ANGLE PROJ.



ANGLE:

±1/2°

CHAMFER:

±5°

TOLERANCE:

.XX ±.01

.XXX ±.005

This drawing is submitted solely for the information and exclusive use of the original addressee. It is not to be divulged in whole or in part, by any firm or individual without written permission from:

FUTEK
ADVANCED SENSOR TECHNOLOGY, INC.

CAGE: 1X8M6

MODEL: QLA237

DWG No.: FO1095

DRAWN BY: H. AU

CHECKED BY: XXXXX

APPROVED BY: XXXXX

DATE: JUN 1, 2005