

DynaLabs

**Modello DYN-PM-20 20 N PM
Manuale**

I ctep|kc

K"pqvvtk"rtqfqvvt"uqpq"ictcpvkvk"eqpvtq"ocvgtkcnk"g"ocpqfqr gtc"fkhgvvqvk"rgt"wp" cppq0"K"fkhgvvk"fgtkxcpvk"fc"gttqtk"fgm)wvpgpv"pqp"uqpq"eqrgtvk"fcnnc"ictcp|kc0

Fktkvq"f)cwvqtg

Vwvvtk"fktkvvt"f)cwvqtg"fk"swguvq"ocpwcng"cr rctvpgpvk"ck"rtqfqvvt" F {pcncdu"uqpq" tkugtxcvk0" Pqp"rw¼"guugt"tkrtqfqvvt"ugp|c"kn"eqpugpuq"uetkvvt0

DiFKDUDLRQL5SRQELOLWj

Dynalabs Ltd. fornisce questa pubblicazione "così com'è" senza garanzie di alcun tipo, esplicite o implicite, incluse, a titolo esemplificativo, le garanzie implicite di commerciabilità o idoneità per uno scopo particolare.

Questo documento è soggetto a modifiche senza preavviso e non deve essere interpretato come un impegno o una rappresentazione da parte di Dynalabs Ltd.

Questa pubblicazione può contenere imprecisioni o errori tipografici. Dynalabs Ltd. aggiornerà periodicamente il materiale nelle nuove edizioni.

Modifiche e miglioramenti al prodotto descritto in questo manuale possono essere apportati in qualsiasi momento.

Table of Contents

1) Introduction.....	4
2) General Information.....	4
2.1) Unpacking and Inspection.....	4
2.2) System Components.....	4
2.3) Theory of Operation.....	4
2.4) Specifications.....	6
2.5) Outline Drawing.....	7
3) Operation and Installation.....	8
3.1) General.....	8
3.1.1) External Signal Mode:.....	8
3.1.2) Internal Signal Mode:.....	9
3.2) Power Requirements.....	10
3.3) Cooling.....	10
3.4) Frequency Response.....	11
4) Mounting Interface.....	11
5) Maintenance and Troubleshooting.....	12
6) Safety.....	12
7) Declaration of Conformity.....	13

1) Introduction

The DYN-PM-20 is designed to provide dynamic force excitation for vibration and shock testing of small sized mechanical structures.

The DYN-PM-20 is a compact, lightweight and powerful general purpose electrodynamic shaker with an integrated amplifier providing up to 20 N peak sine force.

2) General Information

2.1) Unpacking and Inspection

Dynalabs products provide adequate protection for undamaged products to be transported. Document the damages that occur indirectly during the transport and contact the customer representative. Check all components of the shaker. If there is a defect, please contact us.

2.2) System Components

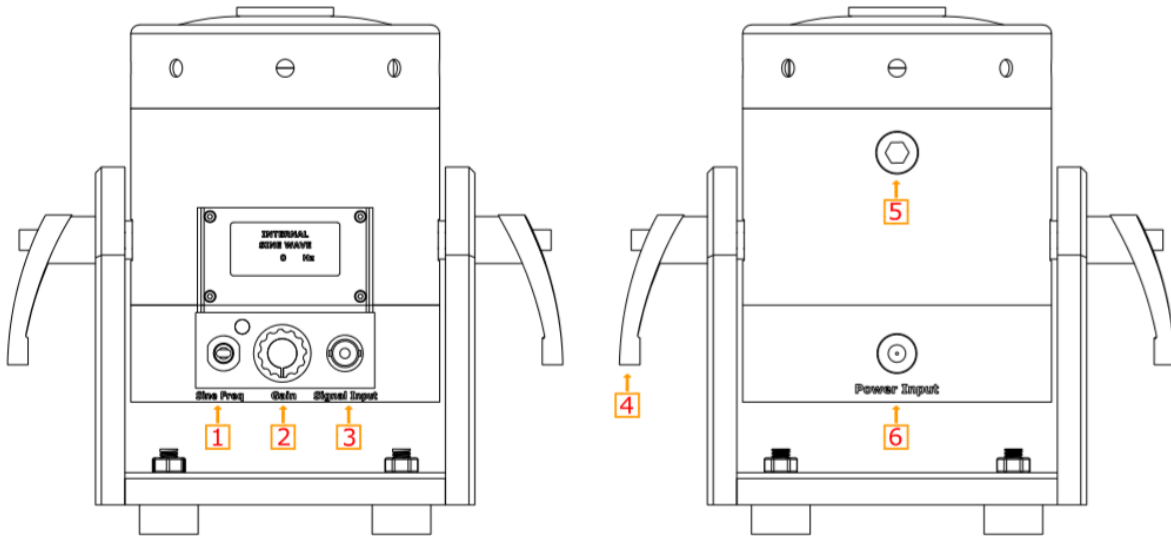
The DYN-PM-20 has the following components:

- Electrodynamic Shaker
- Power Adapter
- Signal Cable
- M3X10 Stainless Bolt
- R 1/8 Pneumatic Union
- Product Manual

2.3) Theory of Operation

DYN-PM-20 is an electro-magnetic actuator. Electro-magnetic actuators are basically voice coils consisting of a permanent magnet and coil. The moving element can be the coil or the magnet depending on the design requirements. The moving element is usually suspended by an elastic membrane.

DYN-PM-20 has a moving coil (driving coil) whose current is controlled for vibration generation. The stationary magnetic field is produced by a permanent magnet.



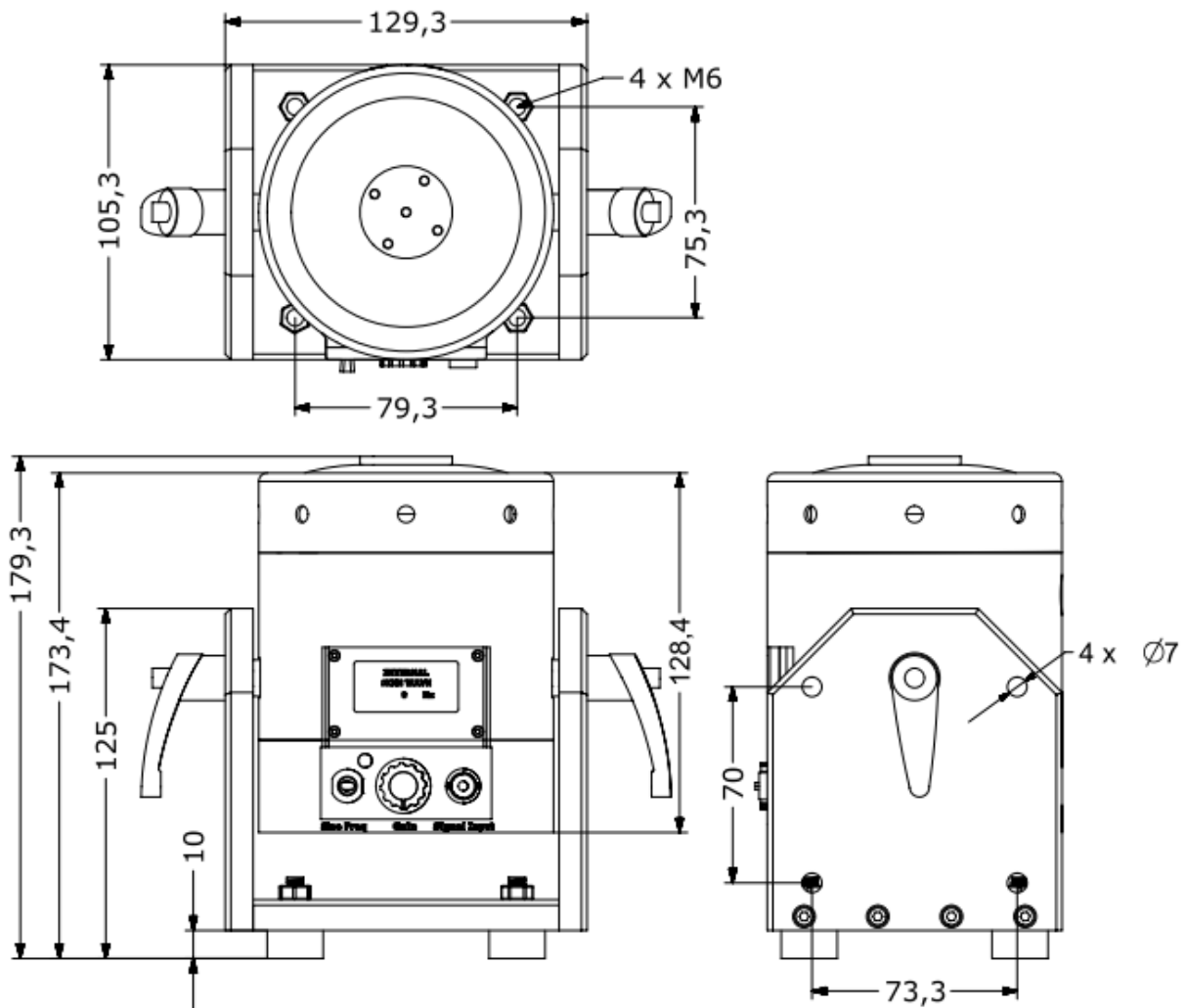
Item	Description
1	Gain Knob
2	Sine Frequency Generator
3	External Signal Input
4	Trunnion Handle
5	Cooling Port
6	DC Power Input

2.4) Specifications

Parameters	Specifications
Output Force (Sinus)	20 N
Output Force (Shock)	40 N
Frequency	0-12 kHz
Payload	0.8 kg
Displacement (Peak to Peak)	5 mm
Suspension	Spring
Maximum Acceleration	40 g
Shaker Weight	4.1 kg
Cooling System	Natural Convection (For continuous operation at 20N forced cooling is suggested)
Operating Temperature Range	5-35 °C
Maximum Input Current	4A (RMS)
AMPLIFIER	INTERNAL
External Signal Voltage Level	1 VAC (PEAK)
Power Supply Voltage	19V DC
Power Supply Current	4.74A

2.5) Outline Drawing

The dimensional properties of DYN-PM-20 shakers are given below.



3) Operation and Installation

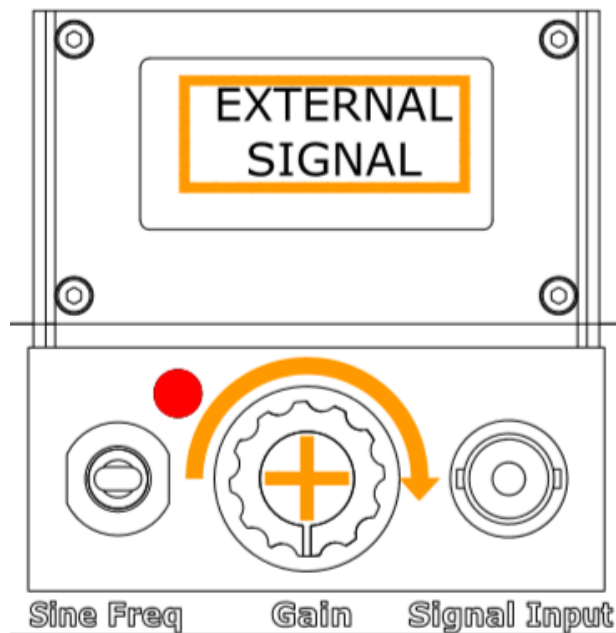
3.1) General

The general shaker connector configuration is given below.



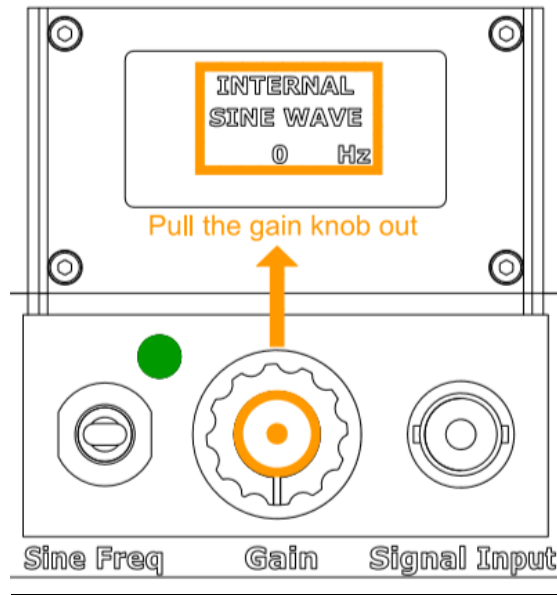
3.1.1) External Signal Mode:

Connect DC power source and drive signal to shaker power input and signal input respectively. Start the external signal source. Adjust the Gain of the amplifier by turning the Gain Knob clockwise.

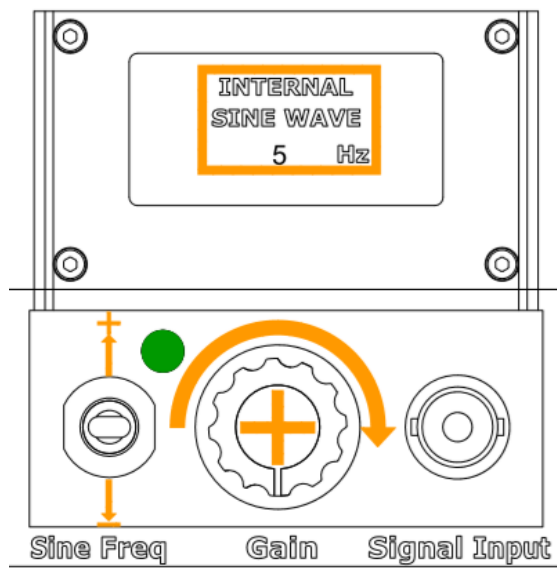


3.1.2) Internal Signal Mode:

The amplifier can generate sine signal from 1Hz to 15kHz with 1 Hz increments that the user can adjust with the Sine Frequency Generator Switch. Connect DC power source and drive signal to shaker power input. Pull the Gain Knob out.



Raise or lower the Sine Frequency Generator Switch to the desired Sine frequency. Adjust the Gain of the amplifier by turning the Gain Knob clockwise. The frequency of the generated sine signal will be visible on the LCD Screen.

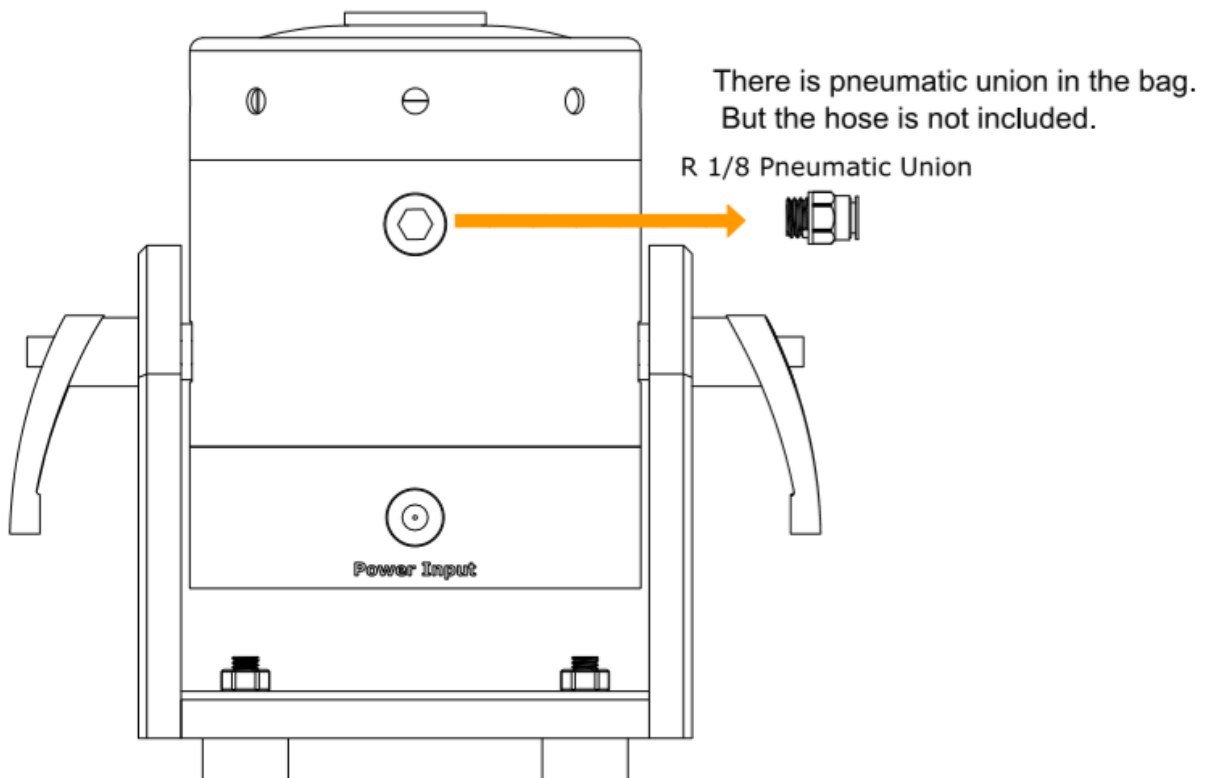


3.2) Power Requirements

DYN-PM-20 has an integrated power amplifier which is powered by its power adaptor. Please note the output voltage and current ratings of the adaptor in a replacement adaptor is to be used.

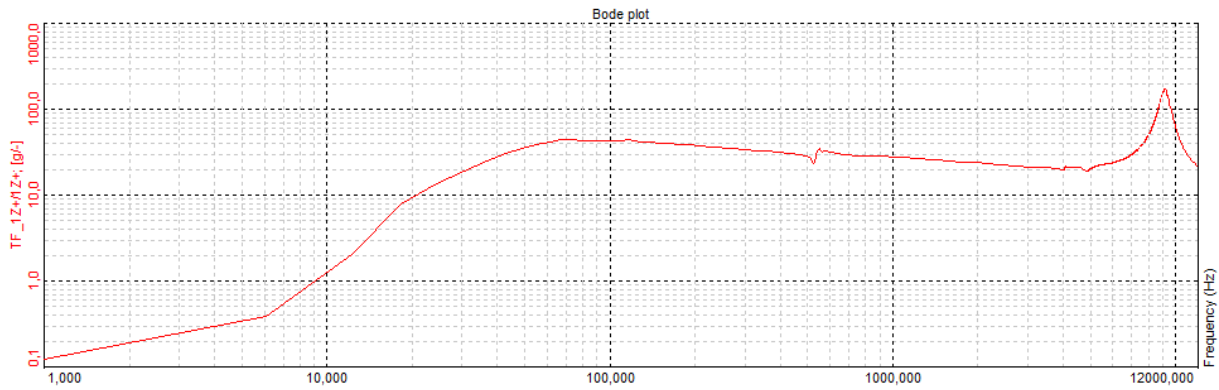
3.3) Cooling

DYN-PM-20 does not require forced cooling. Air convection cooling is sufficient for the force levels given in the specifications.



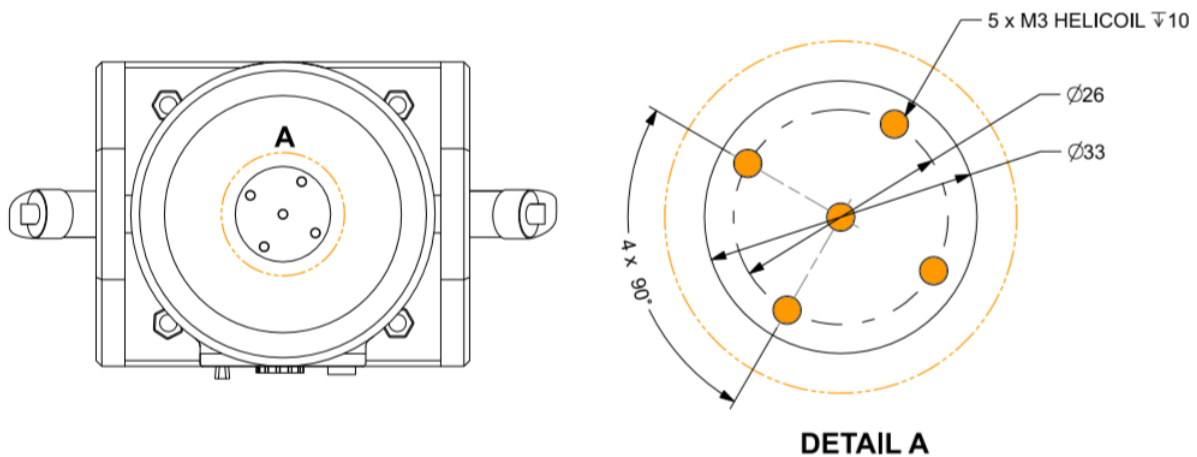
3.4) Frequency Response

The following figure shows the acceleration levels/Input voltage versus frequency of the shaker.



4) Mounting Interface

The shaker has five M3 holes for DUT and fixture connection as shown in the following figure.



5) Maintenance and Troubleshooting

The DYN-PM-20 shaker is a sealed device requiring no maintenance if the operating instructions described in this manual are followed. Repair of damage to the coil, exciter body or magnet core should not be attempted. Please return the shaker to Dynalabs for proper repair.

6) Safety

Please ensure that this manual section is reviewed and understood prior to installation, operation or maintenance of the equipment. The danger of electrical shock or fire always exists in electrical equipment.

The DYN-PM-20 Shaker is designed for safe operation. Safety features such as electrical insulation on outer surfaces are provided for the safe operation of the shaker system.

7) Declaration of Conformity

DynaLabs



*This declaration of conformity is issued under the sole responsibility of the manufacturer.
The product(s) are developed, produced and tested according to following EC- directives:*

- 2014/35/EU – Low Voltage Directive (LVD)
- 2006/42/EU – Machinery Safety Directive
- 2015/863/EU – RoHS Directive

Applied standards:

- EN 61010-1:2010
- EN ISO 12100:2010
- MIL-STD-810-H-2019 (Test Methods: 501.7 - High Temperature, 502.7 - Low Temperature, 514.8 - Vibration, 516.8 – Shock)

*DYNALABS MÜHENDİSLİK SANAYİ TİCARET LİMİTED ŞİRKETİ declares
that above mentioned products meet all the requirements of the above mentioned
standards and regulations.*

Murat Aykan, Technical Manager

Ankara, 15.07.2021